



## Quarterly Activities Report

For the Period Ending 31 March 2014

---

ASX RELEASE

24<sup>th</sup> April 2014

ASX code "RVY"

*Board of Directors:*

**Geoff Gilmour**  
Managing Director

**Greg Cunnold**  
Technical Director

**Graeme Clatworthy**  
Non-executive Director

Level 2  
23 Barrack Street  
Perth, 6000

Tel: +61 8 9221 0090  
Fax: +61 8 9221 0095

ABN 86 121 985 395

### HIGHLIGHTS

- High grade REE results from the first pass drilling programme at the Longonjo prospect Angola.
- The purchase of the remaining 50% of the JORC 520k oz Miyabi Gold Project Tanzania goes unconditional.
- Mineralogy, metallurgy and petrology work commenced on Longonjo REE pulps.
- Tanzanian Commissioner of minerals confirms Illegal miners must be removed from Miyabi & Kitongo.
- Continued review of potential new Projects.

## Projects

### Ozango Project, Angola (Rift Valley 70%)

High grade REE results released from the first pass drilling at Longonjo, The first prospect to be advanced in the newly acquired Ozango Project in Angola.

Highlights included:

- 4m composite assays up to 11.32% TREO
- All drill holes returned significant REE mineralisation from surface over an area 600m x 500m
- Mineralisation remains open in all directions and at depth
- Broad mineralised intercepts from surface including:
  - 39m @ 4.48% TREO from surface
  - 21m @ 5.33% TREO from surface
  - 32m @ 4.94% TREO from surface
  - 20m @ 6.75% TREO from surface



*Figure 1: Drilling at Longonjo*

The assay results pertaining to the first pass drilling programme initiated at Longonjo in January 2014 and completed during February 2014 have been returned. As previously announced (24 January 2014) the drilling aimed to test the bedrock mineralisation beneath a +0.5% REE soil anomaly some 3.5km long and 1.7km wide.(figure 4) The Rotary Air Blast (RAB) drilling was carried out to blade refusal on a nominal 100m x 100m, staggered grid pattern and has tested an area of approximately 600m x 500m. Drilling encountered significant rare earth mineralisation - in every hole (Table 1). Mineralisation remains open in every direction and at depth. A drill hole location plan illustrating the significant intersections is presented below.

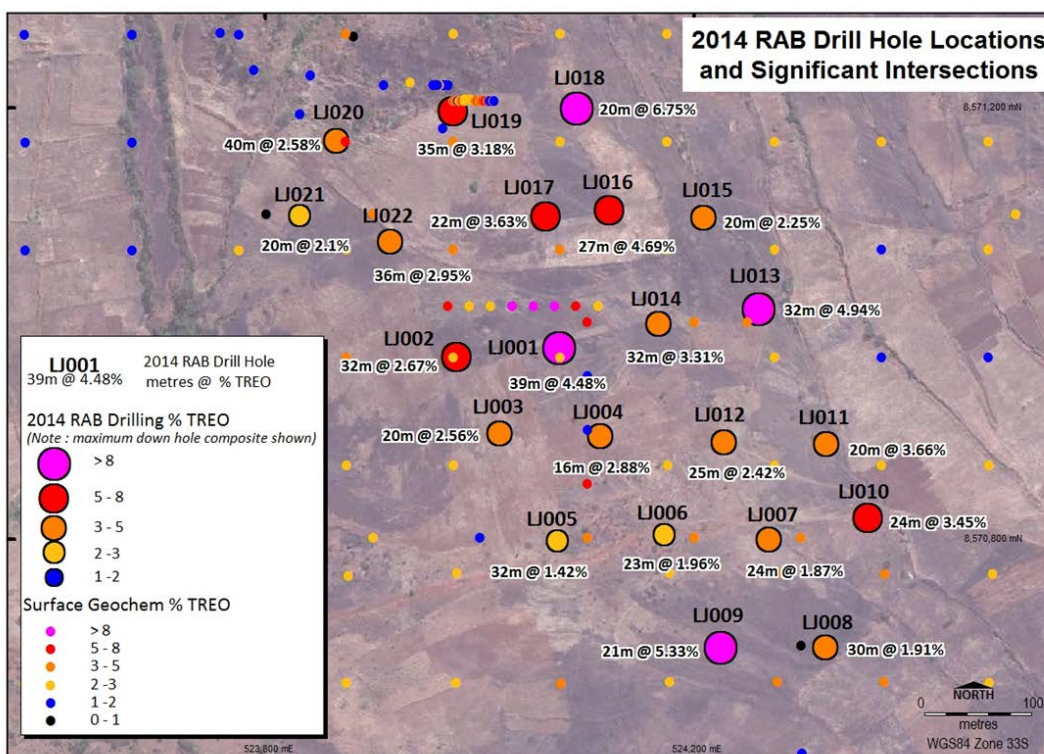


Figure 2: Longonjo RAB drill hole location plan

Assay results relate to four metre composite samples compiled on site and submitted to Intertek (Walvis Bay - Namibia) for sample preparation with the resulting pulps sent to Genalysis (Perth - Australia) where analysis was carried out by way of fusion with an ICP-MS finish. The highest TREO composite result returned was 11.32%, detailed in the section below.

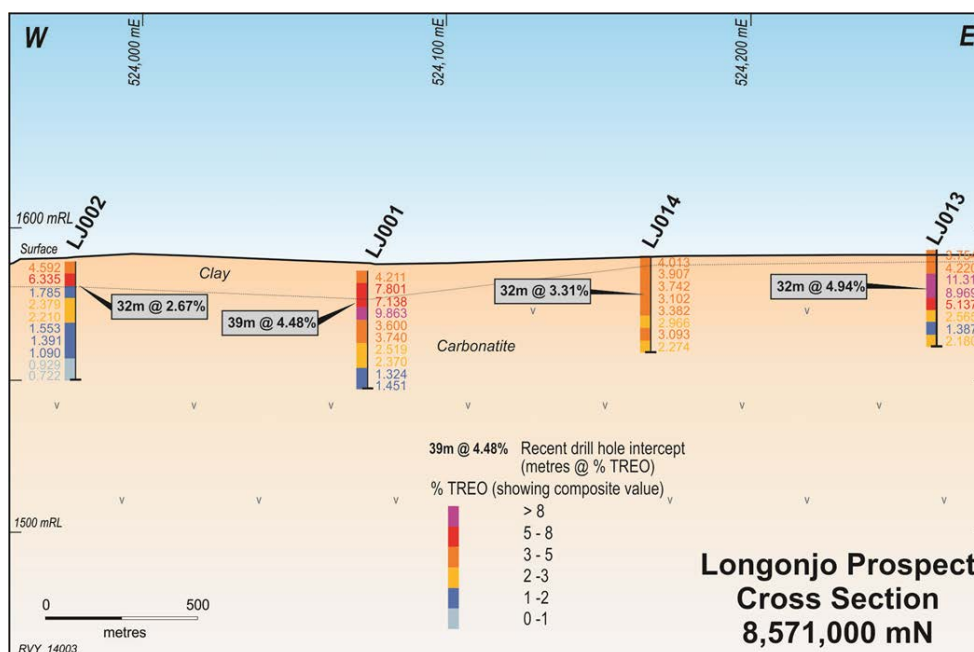


Figure 3: Longonjo RAB, drill sections 857100N (looking North)

The Directors consider the initial Longonjo RAB drilling programme an unmitigated success. Whilst drilling has tested only a small portion of the soil anomaly the geochemistry has been qualified at depth with broad intersections of significant rare earth mineralisation over an area with sufficient potential to delineate substantial tonnages. The mineralisation occurs from surface and remains open in every direction as well as at depth. A ‘fly through’ is posted on the Rift Valley Resources website.

Link to fly through: [www.riftvalleyresources.com.au](http://www.riftvalleyresources.com.au)

The Company considers the metallurgical assessment of Longonjo to be the next priority. To this end RIVY has engaged the services of Gavin Beer, a consultant metallurgist who specialises in REE metallurgy and has worked on deposits for Arafura Resources, Peak Resources and Mkango Resources amongst others. Gavin has initiated a metallurgical characterisation test work Programme.

This work is aimed at:

1. Identifying if there is any natural size versus grade concentration that may aid ore beneficiation.
2. Assessing if magnetics may be used for the upgrading rare earth minerals.
3. Investigating the potential for gravity separation.
4. Conducting a mineralogy assessment.

The test work is scheduled to take 4 weeks, the results of which will be announced to the market as they come to hand.

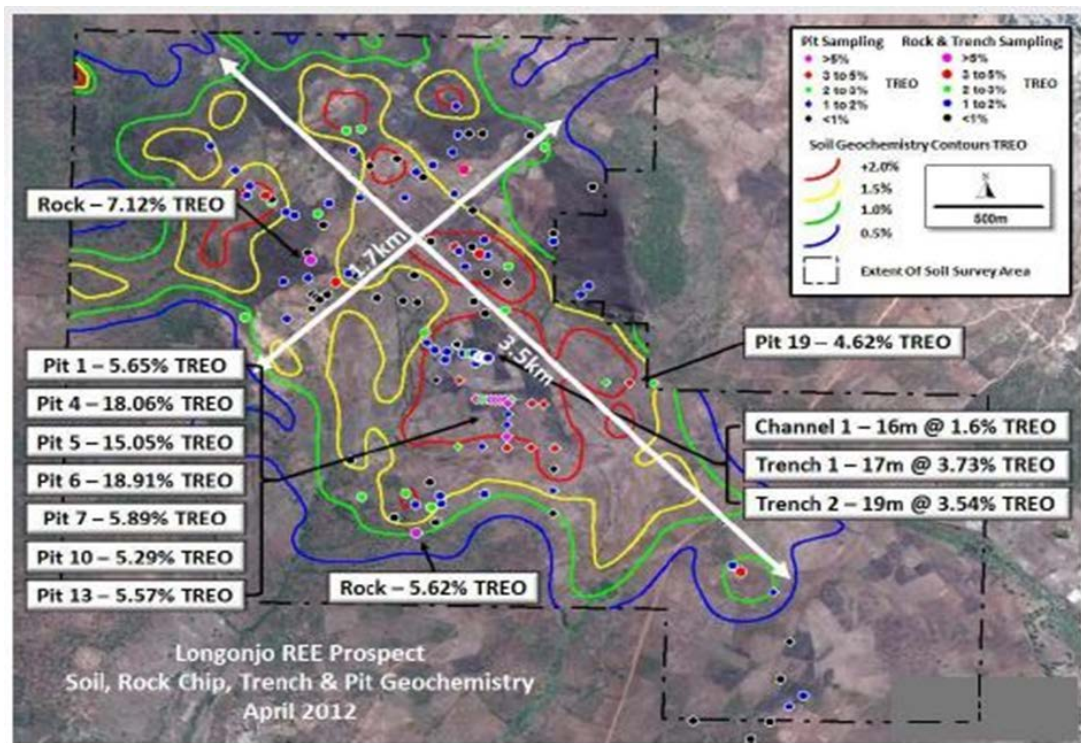


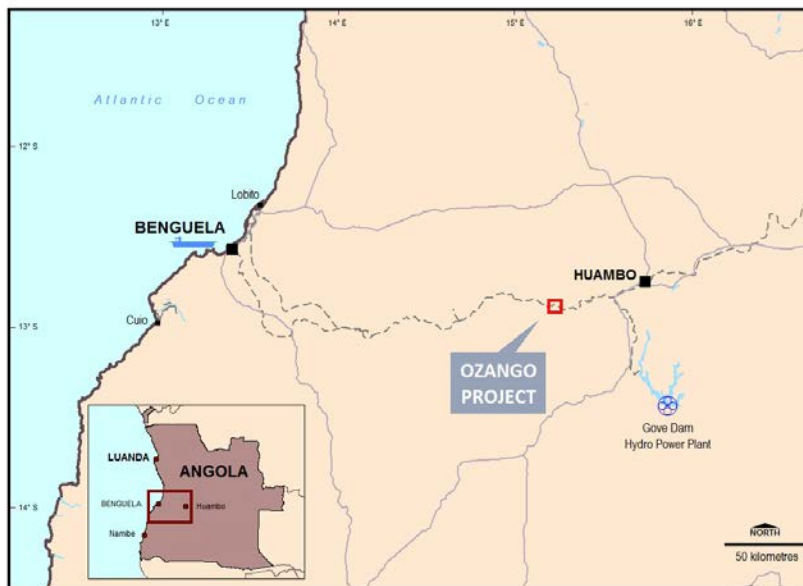
Figure 4: Previous sampling Longonjo large REE foot print



Figure 5: Longonjo Carbonatite vent, looking west from National highway

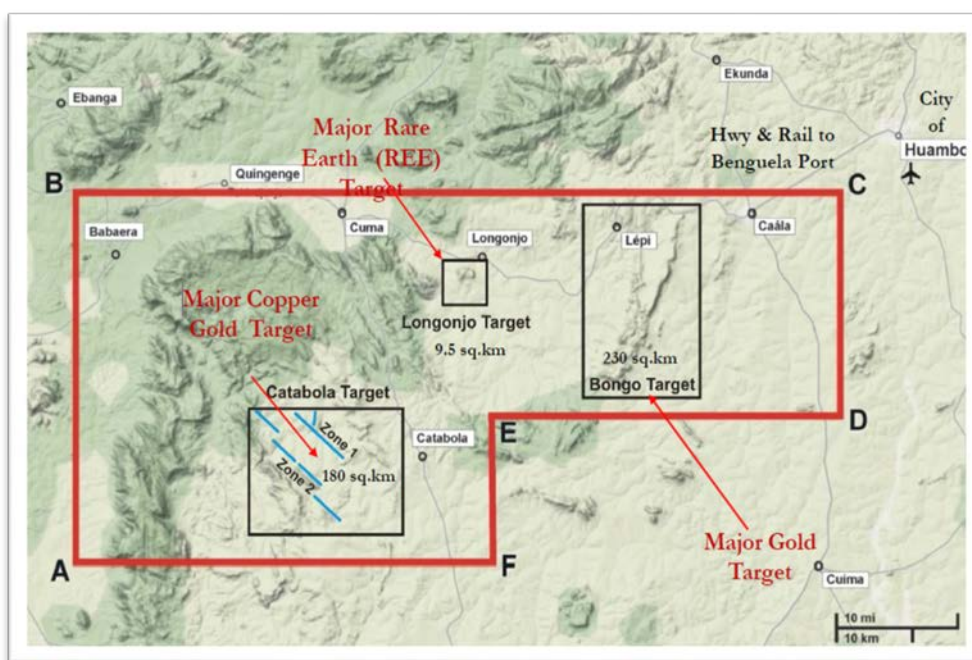
**Background Information**

The Longonjo REE prospect is located within the Ozango Project, approximately 600km southeast of the Angolan capital Luanda and 50km west of the regional city of Huambo. It is located proximal to good infrastructure including roads, towns and the recently recommissioned railway which links the area to the deep water Atlantic port of Lobito.



*Figure 6: Location of Ozango Project containing Longonjo REE prospect*

The Ozango Project consists of a single Exploration Licence (009/01/07T.P/ANG-MGMI/2011) that covers a large area of 3,670 square kilometres. The property extends for 100 kilometres in an east-west direction and varies between 28 to 46 kilometres in width. The northeast corner of the property comes to within 17 kilometres of Huambo.



*Figure 7: Ozango project showing Longonjo REE Prospect and other major targets*

The Project area covers some 3,670km<sup>2</sup> of Archaean/Palaeoproterozoic greenstone rocks that have been intruded by Cretaceous felsic volcanics, carbonatites and kimberlites. These rocks are considered highly prospective for REE, phosphate, copper, iron ore and gold. To date, however, this area has seen very little modern exploration.

The Longonjo REE prospect is the first target within the Ozango Project to be drill tested by Rift Valley. Located near the town of Longonjo in the north-central portion of the Project area the prospect centers on a Cretaceous age, Carbonatite intrusive. The geology is typical of REE mines and prospects globally including Lynas Corp's Mt Weld deposit in Western Australia and Peak Resources' Ngualla deposit in Tanzania.

A soil geochemical sampling program undertaken at Longonjo over an area of 8km<sup>2</sup> defined a large and robust 3.5km long and 1.7km wide +0.5% REO anomaly which remains open to the west. A follow up trenching and pitting program carried out to test the bedrock within the soil anomaly returned highly encouraging results of up to 18.9% TREO from the pit bedrock samples. The drilling program aims to test the subsurface mineralization and will also provide sufficient sample for an initial metallurgical assessment to be carried out.

#### **Miyabi Project, Tanzania (Rift Valley 50%)**

The purchase of the remaining 50% of the Miyabi gold project is now unconditional; Settlement of the purchase will take place on the Transfer of the tenement licences to Carlton Miyabi Tanzania (a subsidiary of Rift Valley) Terms of the sale USD\$400,000 in cash plus USD \$100,000 in Rift Valley shares on a 5 day vwap on completion of the tenement transfer.

#### **Kitongo Project, Tanzania (Rift Valley 100%)**

Application has been lodged for the renewal of the retention licenses RL002/2009, RL003/2009 and RL004/2009. Further discussions with the new Commissioner continue on illegal mining activity & access at Kitongo.

*We advise in accordance with Australian Stock Exchange Limited Listing Rules 5(6) that the exploration results contained within this ASX Release is based on information compiled by Mr Greg Cunnold who is a member of the Australian Institute of Mining and Metallurgy. Mr Cunnold is a consultant of Rift Valley Resources Ltd and has consented in writing to the inclusion in this ASX Release of matter based on the information so compiled by him in the form and context in which it appears. Mr Cunnold has sufficient experience relevant to the style of mineralisation and type of deposit under consideration to be qualified as a Competent Person as defined by the 2012 Edition of the “Australian Code for reporting of Exploration Results, Mineral Resources and Ore Reserves”.*

*The information in this release that relates to Metallurgical Testwork is based on information compiled and / or reviewed by Mr Gavin Beer who is a Member of The Australasian Institute of Mining and Metallurgy and a Chartered Professional. Mr Beer is a Consulting Metallurgist with sufficient experience relevant to the activity which he is undertaking to be recognized as competent to compile and report such information. Mr Beer consents to the inclusion in the report of the matters based on his information in the form and context in which it appears.*

For further information please contact:

**Geoff Gilmour**  
Managing Director

**Rift Valley Resources Limited**  
Tel: +61 8 9221 0090  
Fax: +61 8 9221 0095  
[info@riftvalleyresources.com.au](mailto:info@riftvalleyresources.com.au)



**Tenement Information as at 31 March 2014**

Country	Project Name	License Name	License no.	% held as at 31 Dec 2013	Disposed / acquired during quarter	% Held as at 31 March 2014
<b>Tanzania</b>	Kitongo	Mwamazengo South - Hasanet	HQ-P20825	100%	-	100%
	Kitongo	Mwamazengo South	HQ-P22362	100%	-	100%
	Kitongo	Ugambilo East	HQ-P22364	100%	-	100%
	Kitongo	Kitongo West	HQ-P22428	100%	-	100%
	Kitongo	Mwamazengo SE	HQ-P22557	100%	-	100%
	Kitongo	Ugambilo East	HQ-P26791	100%	-	100%
	Kitongo	Mwamazengo South	HQ-P26792	100%	-	100%
	Kitongo	Mwamazengo South - Hasanet	PL2697	100%	-	100%
	Kitongo	Kitongo West	PL3566	100%	-	100%
	Kitongo	Mwamazengo South East	PL3616	100%	-	100%
	Kitongo	Busongo North	PL4618	100%	-	100%
	Kitongo	Ugambilo North	PL6385	100%	-	100%
	Kitongo	Kitongo West	PL6499	100%	-	100%
	Kitongo	Mwamazengo SE	PL6543	100%	-	100%
	Kitongo	Mwamazengo	PL6629	100%	-	100%
	Kitongo	Mwamazengo South	PL6631	100%	-	100%
	Kitongo	Ugambilo East	PL8441	100%	-	100%
	Kitongo	Busongo	PL8699	100%	-	100%
	Kitongo	Ugambilo RL	RL0002	100%	-	100%
	Kitongo	Kitongo RL	RL0003	100%	-	100%
	Kitongo	Mwamazengo RL	RL0004	100%	-	100%
<b>Tanzania</b>	Miyabi	Miyabi South Idahina	HQ-P26826	50%	-	50%
	Miyabi	Miyabi South West	HQ-P21345	50%	-	50%
	Miyabi	Miyabi North	PL4536	50%	-	50%
	Miyabi	Miyabi Mwabomba North	PL4592	50%	-	50%
	Miyabi	Miyabi Northwest	PL5115	50%	-	50%
	Miyabi	Miyabi South	PL6369	50%	-	50%
	Miyabi	Miyabi South	PL6382	50%	-	50%
	Miyabi	Miyabi Airport	PL6593	50%	-	50%
	Miyabi	Miyabi Mwabomba West	PL6752	50%	-	50%
	Miyabi	Miyabi Dyke	PL8933	50%	-	50%
	Miyabi	Miyabi Mwabomba Central	PL8934	50%	-	50%
<b>Tanzania</b>	Nyang'ombe	Nyang'ombe North	HQ-P19030	100%	-	100%
	Nyang'ombe	Nyang'ombe West	HQ-P20490	100%	-	100%
	Nyang'ombe	Nyang'ombe North	HQ-P22316	100%	-	100%
	Nyang'ombe	Nyang'ombe North	PL3534	100%	-	100%
	Nyang'ombe	Nyang'ombe BEAL	PL6502	100%	-	100%
<b>Angola</b>	Ozango	Ozango	009/01/07T.P/ANG-MGMI/2011	70%	-	70%